

JET

JML-1014

WOODWORKING LATHE

708351M

230/50/1

PARTS LIST
ERSATZTEILLISTE
LISTE DE PIECES

WMH Tool Group AG

Bahnstrasse 24, CH-8603 Schwerzenbach

www.wmhtoolgroup.ch; info@wmhtoolgroup.ch

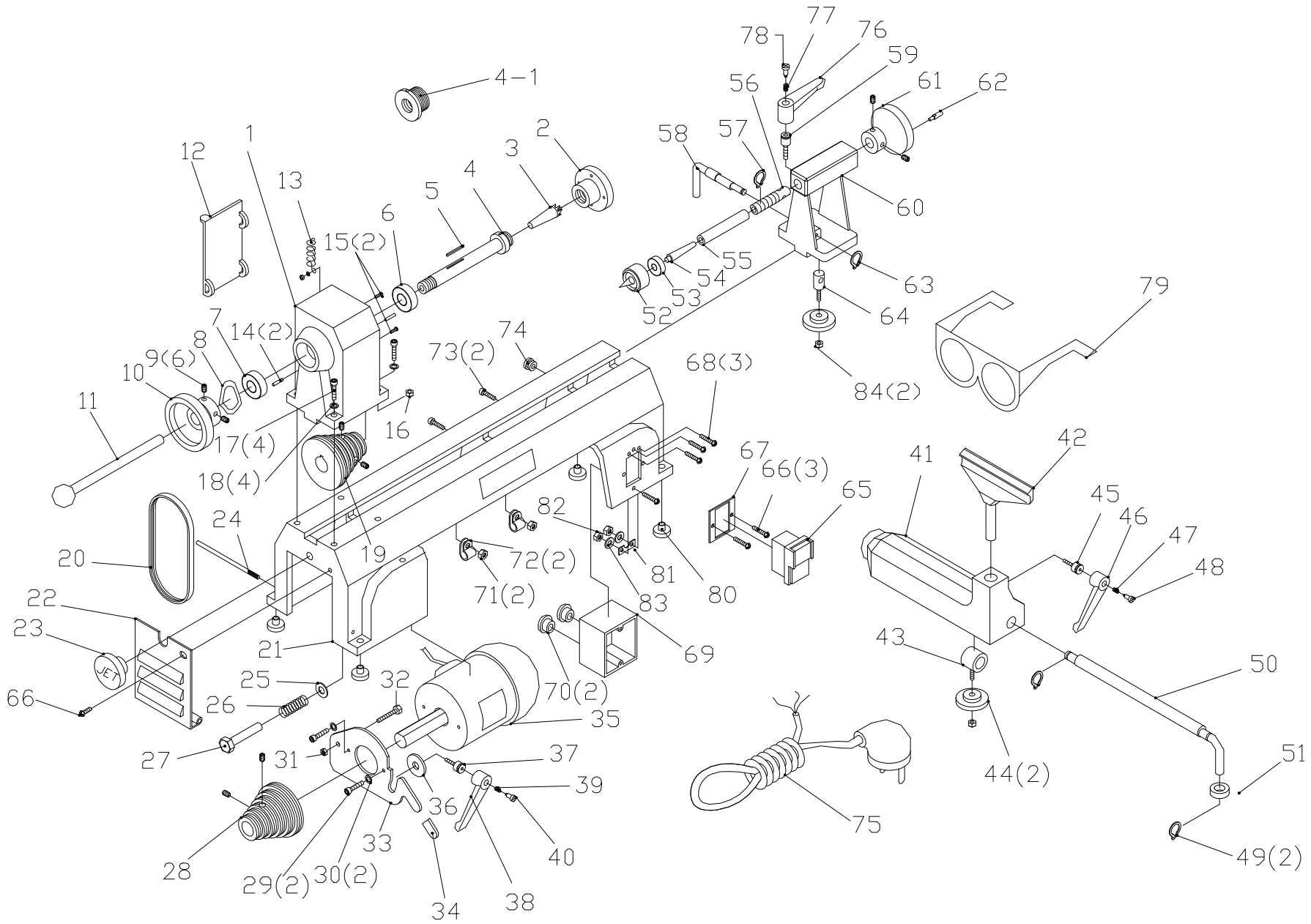
Tel +41 (0) 1 806 47 48

Fax +41 (0) 1 806 47 58

P-708351M 03/02



Lathe Assembly



Parts List for the JML-1014 Wood Lathe

Index No.	Part No.	Description	Size	Qty.
1	JML-1	Headstock		1
2	JML-2	Faceplate	3"	1
3	JML-3	Spur Center	MT2	1
4	JML-4	Spindle	8TPI	1
	JML-4-1E	Adapter	M33x3.5 / 8TPI	1
5	JML-5	Key	5x25	1
6	BB-6005VV	Ball Bearing		1
7	BB-6004VV	Ball Bearing		1
8	JML-8	Wave Washer		1
9	JML-9	Set Screw	1/4-20x3/8	6
10	JML-10	Handlewheel		1
11	JML-11	Drift Rod		1
12	JML-12	Spindle Pulley Door		1
13	JML-13	Spring		1
14	JML-14	Roll Pin	3x10	2
15	JML-15	Round Head Screw	3/16-24x5/8	2
16	JML-16	Hex Nut	3/16	1
17	JML-17	Hex Socket Cap Screw	1/4-20x3/4	4
18	JML-18	Lock Washer	1/4	4
19	JML-19	Spindle Pulley		1
20	JML-20	Belt		1
21	JML-21E	Bed		1
22	JML-22	Motor Pulley Door		1
23	JML-23	Lock Knob	M8	1
24	JML-24	Pin		1
25	JML-25	Flat Washer	M8	1
26	JML-26	Spring		1
27	JML-27	Hex Cap Screw	M8x3	1
28	JML-28	Motor Pulley		1
29	JML-29	Hex Socket Cap Screw	1/4-20x5/8	2
30	JML-30	Flat Washer	1/4	2
31	JML-31	Lock Nut	5/16	1
32	JML-32	Hex Cap Bolt	5/16-18x1	1
33	JML-33	Motor Bracket		1
34	JML-34	Handle Protector		1
35	JML-35E	Motor		1
	JML-35-1E	Capacitor(not show)		1
	JML-35-2E	Capacitor Cover(not show)		1
	JML-35-3	Motor Fan Cover(not show)		1
36	JML-36	Flat Washer	5/16	1
37	JML-37	Stud		1
38	JML-38	Handle		1
39	JML-39	Spring		1
40	JML-40	Stud		1
41	JML-41	Tool Rest Body		1
42	JML-42	Tool Rest	6"	1
43	JML-43	Bolt		1
44	JML-44	Clamp		2
45	JML-45	Stud		1
46	JML-46	Handle		1
47	JML-47	Spring		1
48	JML-48	Stud		1

Index No.	Part No.	Description	Size	Qty.
49	JML-49	C-Ring		2
50	JML-50	Eccentric Rod		1
51	JML-51	Bushing		1
52	JML-52	Live Center Head		1
53	BB-600ZZ	Ball Bearing		1
54	JML-54	Live Center Shaft		1
55	JML-55	Tailstock Spindle		1
56	JML-56	Leadscrew		1
57	JML-57	E-Ring		1
58	JML-58	Eccentric Rod		1
59	JML-59	Stud		1
60	JML-60	Tailstock		1
61	JML-61	Handlewheel		1
62	JML-62	Handle		1
63	JML-63	C-Ring		1
64	JML-64	Bolt		1
65	JML-65E	Magnetic Switch (VDE)		1
66	JML-66	Round Head Screw		3
67	JML-67	Switch Bracket		1
68	JML-68E	Round Head Machine Screw		3
69	JML-69	Switch Cover		1
70	JML-70E	Stain Relief Bushing		2
71	JML-71	Hex Nut	3/16	2
72	JML-72	Cord Clamp		2
73	JML-73	Round Head Screw	3/16-24x1	2
74	JML-74	Cord Protetor		1
75	JML-75	Power Cord(VDE)		1
76	JML-76	Handle		1
77	JML-77	Spring		1
78	JML-78	Stud		1
79	JML-79	Safety Goggles		1
80	JML-80	Pad		4
81	JML-81E	Ground Plate		1
82	JML-82E	Hex Nut	3/16	2
83	JML-83E	Flate Washer	3/16	2
84	JML-84	Clamp Nut	3/8	2

JML-1014
708351M

230/50/1

	colour of strands	Litzenfarben	couleur des cordons
BK	black	schwarz	noir
WH	white	weiß	blanc
BU	blue	blau	bleu
YE	yellow	gelb	jaune
RD	red	rot	rouge
BN	brown	braun	brun
GY	grey	grau	gris
GNYE	green-yellow	grün-gelb	vert-jaune
OG	orange	orange	orange
VT	violet	violett	violet

	meaning of symbol	Bedeutung der Zeichen	interprétation
M	motor	Motor	moteur
S	switch	Schalter	interrupteur
C	condenser	Kondensator	condensateur
E	electronic unit	Elektronik Einheit	unité électronique
F	fuse	Sicherung	fusible
RS	reversing switch	Drehrichtungsschalter	commu. droite/gauche
CS	centrifugal switch	Fliehkraftschalter	déclencheur centrifuge
OL	overload cut-off	Überlastschuttschalter	déclencheur surcharge
LS	limit switch	Positionsendschalter	micro

